

# Bluetooth Karaoke Instructions

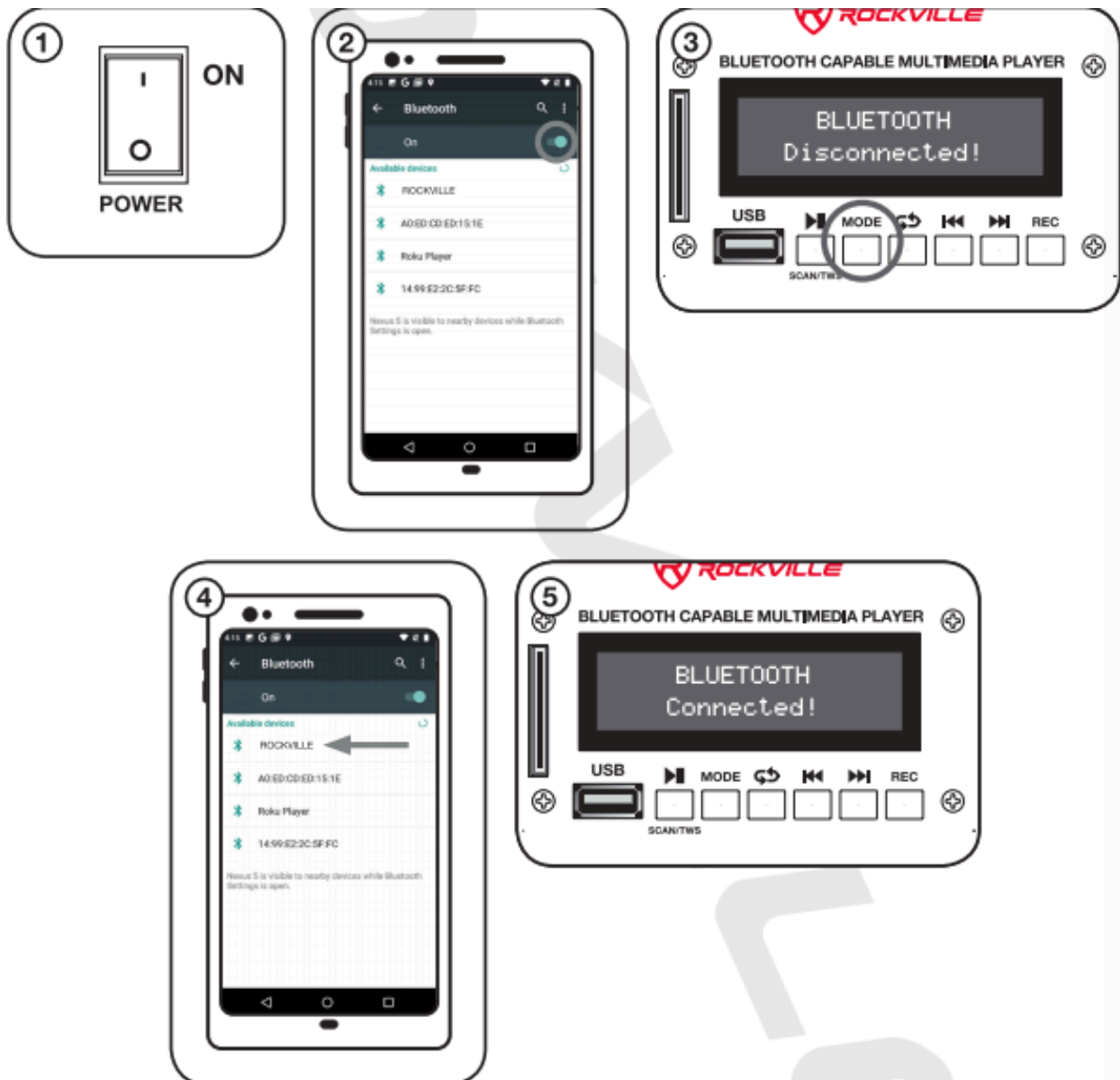
## Features:

- 2 wireless microphones that can be used for speeches, musical performances, and karaoke
- Completely portable with a rechargeable battery that lasts up to 8 hours on a full charge
- Bluetooth connectivity that allows a phone, tablet, or computer to connect and play music
- Integrated MP3 player with connections for USB and SD
- Built-in wheels and carry handles that allow for easy transport
- Can be paired with another speaker either wirelessly or with an XLR cable
- Stand-mountable
- 800 Watts Peak Power
- 200 Watts RMS



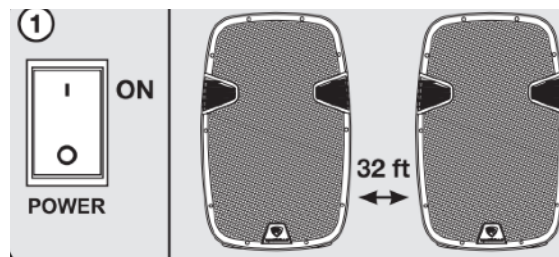
## Connecting via Bluetooth:

- Press the “mode” button on the back panel until the screen says “Bluetooth”
- Go to the bluetooth settings in the phone, tablet, or computer that you want to play music from and look for a device named “ROCKVILLE”
- After selecting “ROCKVILLE”, you will be paired and ready to play music
- Use the “MP3 Vol” knob to control the volume level

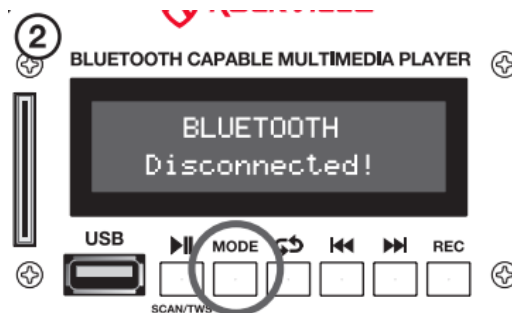


## Connecting Two Speakers:

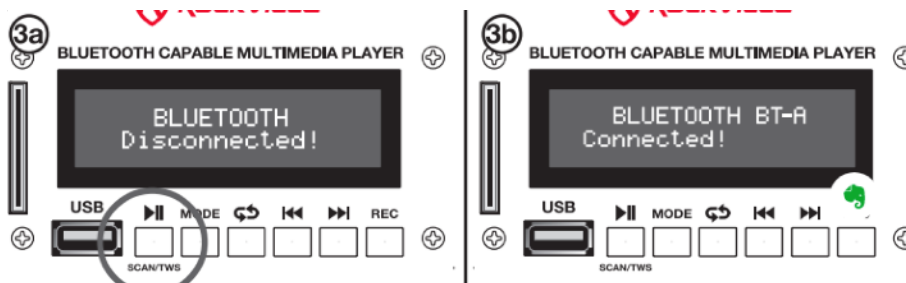
- There are two ways to do this; one is to do it **wirelessly**, and the other is to do it with an **XLR cable**
- **Connecting wirelessly:**
  - Make sure both speakers' power switches are in the ON position and that they are within 32 feet of each other



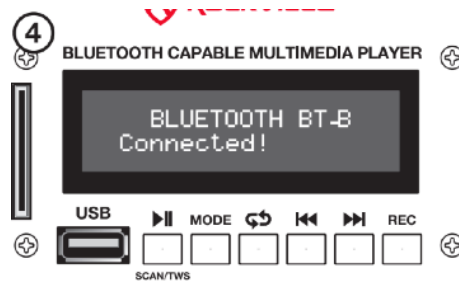
- Press the “Mode” button on both of the units to enter Bluetooth mode. The LCD screens should show that the speakers are not connected via Bluetooth or to another speaker.



- Press the SCAN/TWS button on one of the units for 3 seconds. If pairing is successful, the unit's LCD screen will read “BLUETOOTH BT-A Connected”. This is the primary and all functions will be controlled by this unit.



- The secondary unit's LCD screen will read "BLUETOOTH BT-B Connected".



- Once the speakers are connected, go to your phone's Bluetooth interface and select "ROCKVILLE" from the list of devices. If connection is successful, you will hear the same audio from both units.



- \*NOTE\* once the units are in TWS mode, the primary unit becomes the master unit and will control all functions

- **Connecting with an XLR cable**

- Plug an XLR cable into the "Line Out" of the primary speaker



- Plug the other end of the cable into the “Line In” of the second speaker

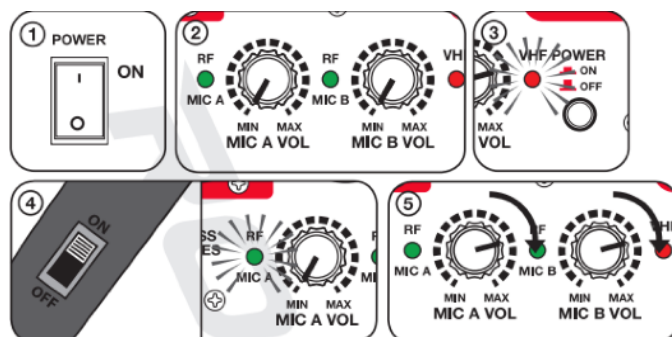


- Adjust the “Line Level” on the second speaker to control the volume



### **Wireless Microphone Set-Up:**

- Keep both Mic A and Mic B Volume and Channel B wireless Mic Volume at Min position
- Press the VHF power on button (red indicator light should be on)
- Switch on one microphone. It should automatically connect to the corresponding channel and the LED for that channel should light up.
- Repeat steps for the second microphone
- Use the Mic A / Mic B volume controls to adjust each microphone’s volume



## Troubleshooting

- **The speaker isn't turning on, even though it's plugged in**
  - Flip the power switch that's next to the power cord on the back
- **The sound quality is dull, muddy, or just doesn't sound right**
  - Make sure the Equalizer settings are all at the neutral (midway) position



- **There's no sound coming out of the speaker, even though the MP3 volume is turned up**
  - Make sure the volume is turned up on your phone, tablet, or computer as well
- **The microphone isn't working**
  - Make sure the "Mic A / Mic B Vol" knobs are turned up, that the switch on the microphone handle is on, and that the "VHF Power" button is on